

APPENDIX A
Figures

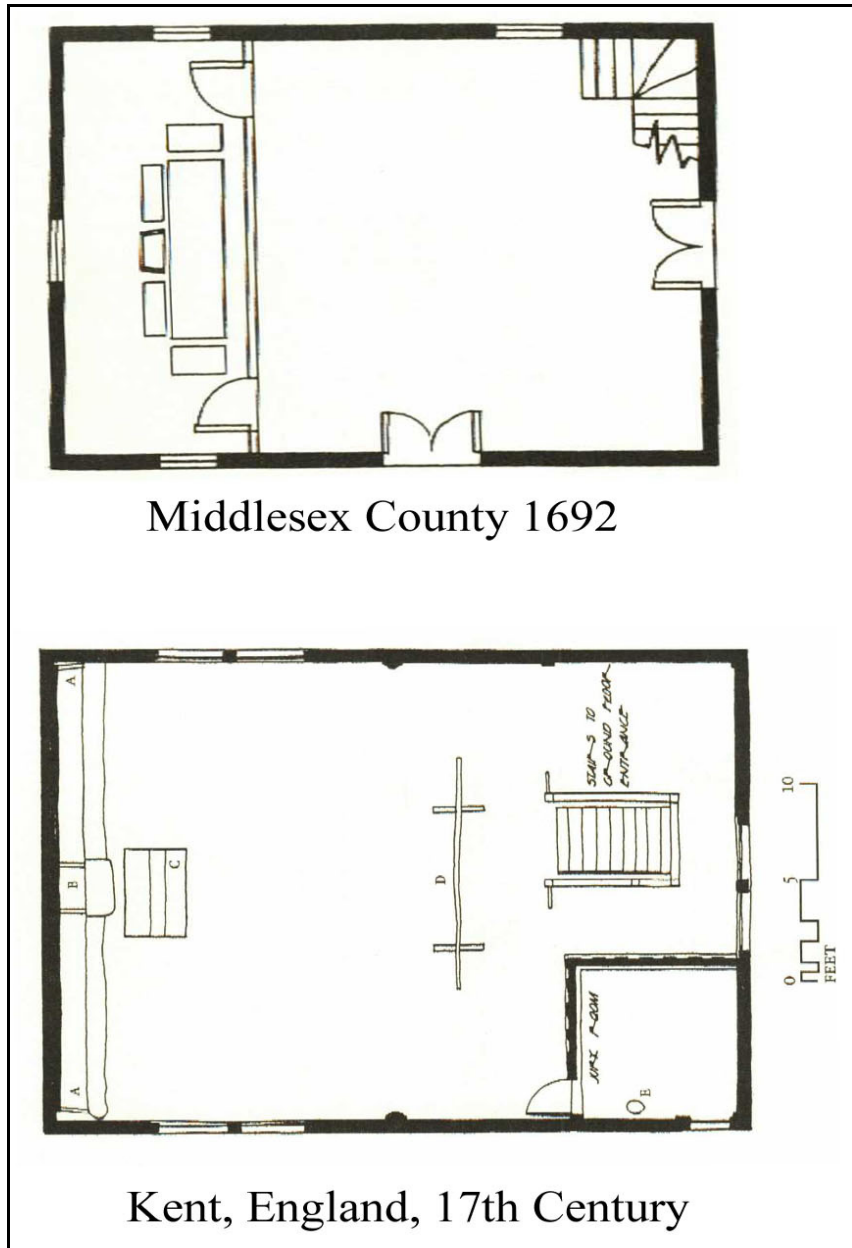


Figure 1. Seventeenth century courthouses (from Lounsbury 2005: 71, 74)



Figure 2. Colonial Williamsburg's courthouse

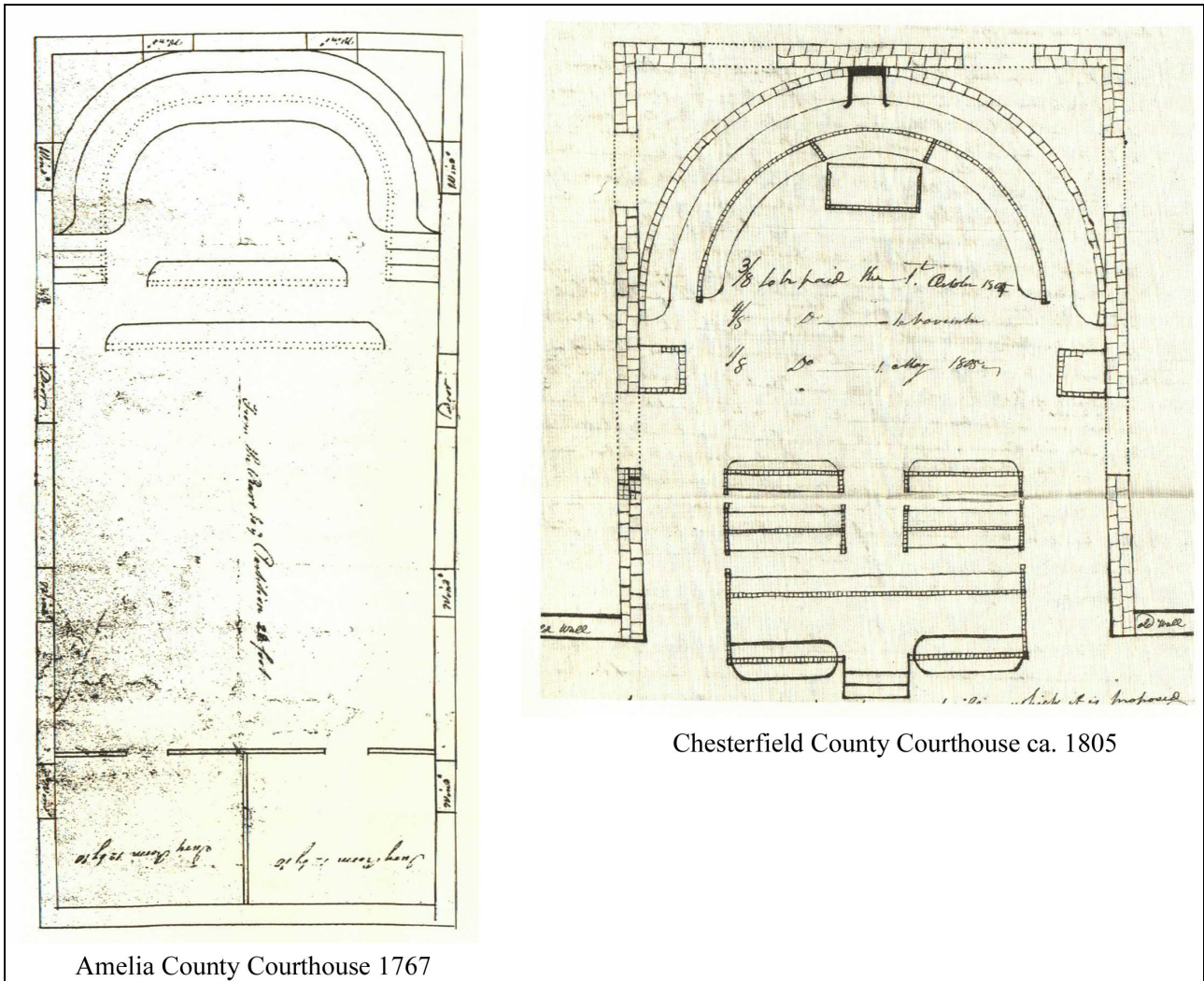
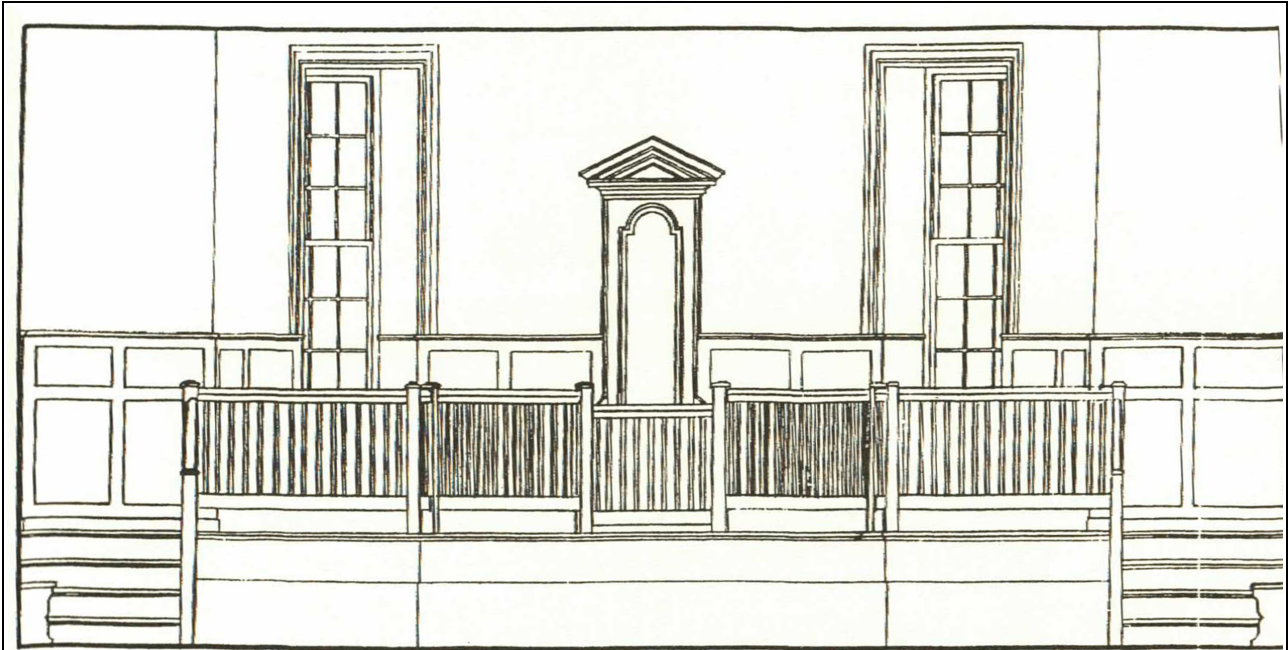
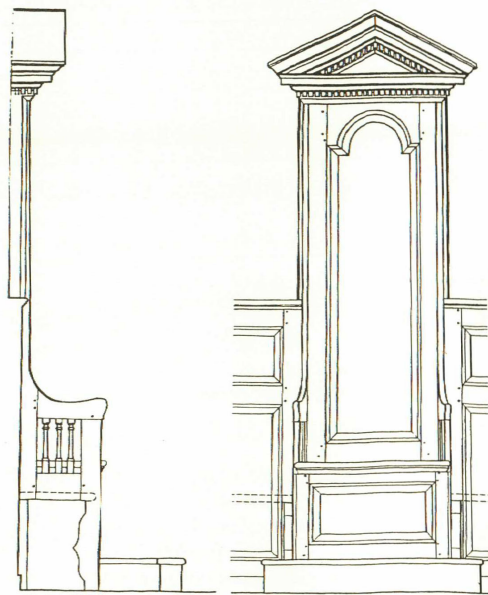


Figure 3. Eighteenth century courthouse layouts (from Lounsbury 2005: 179, 163)



Chowan County Courthouse, ca. 1768, , Edonton, North Carolina



Chief Magistrate's Chair Chowan County Courthouse ca. 1768

Figure 4. Chowan County Magistrates platform and Chief Magistrates chair (Lounsbury 2005: 143, 148)



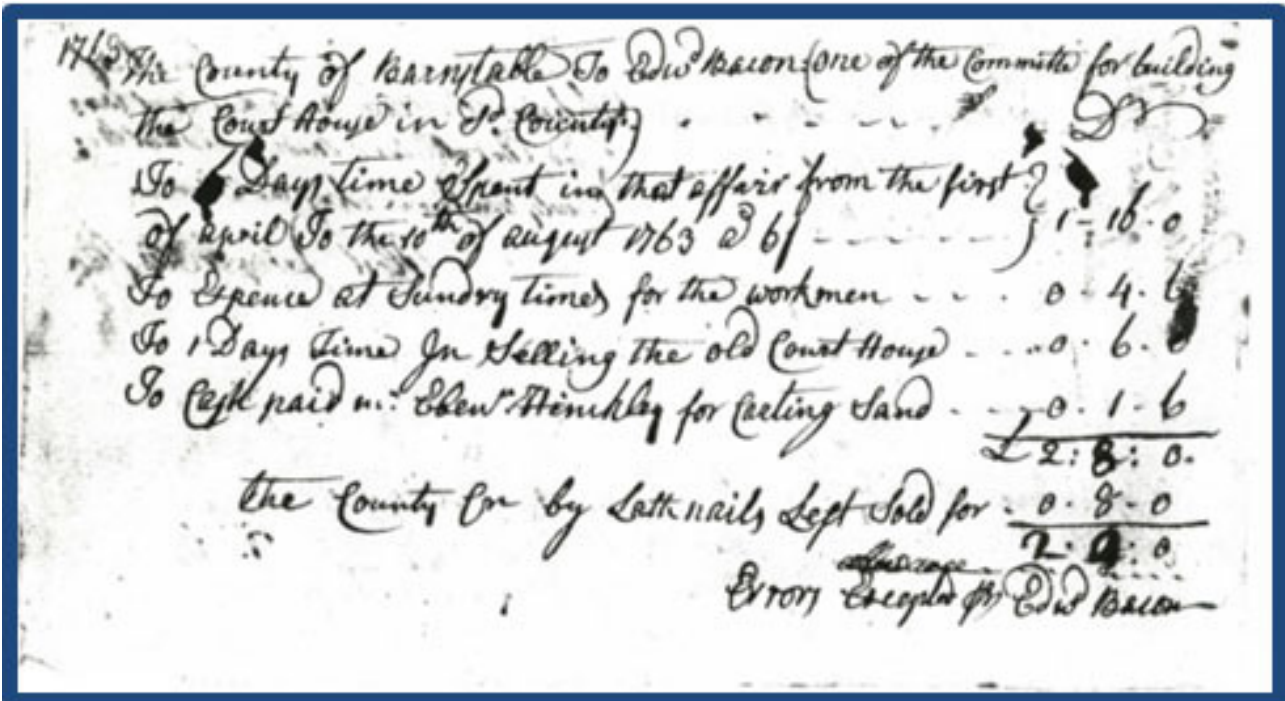
Figure 5. King George III court of arms (1714-1801)



Figure 6. Patrick Henry in the courtroom (from Lounsbury 2005: 152)



Figure 7. The locations of the public buildings and taverns in Barnstable center



1763 The County of Barnstable to Edw'd Bacon (one of the Committee for building the Court House in Said County)

To 6 days time spent in that affair from the first of April to the 10 th of August 1763 @ 6/	1 16 0
To expense at Sundry times for the workmen	0 4 6
To 1 Days time in Selling the old Court House	0 6 0
To cash paid to Eben. Hinckley for carting sand	0 1 6
	<u>£ 2:8:0</u>
the County cr by lath nails left sold for	0 8 0
	<u>2 0 0</u>

Errors excepted by Edw'd Bacon

Figure 8. Edward Bacon's receipt (transcription courtesy of Tales of Cape Cod)

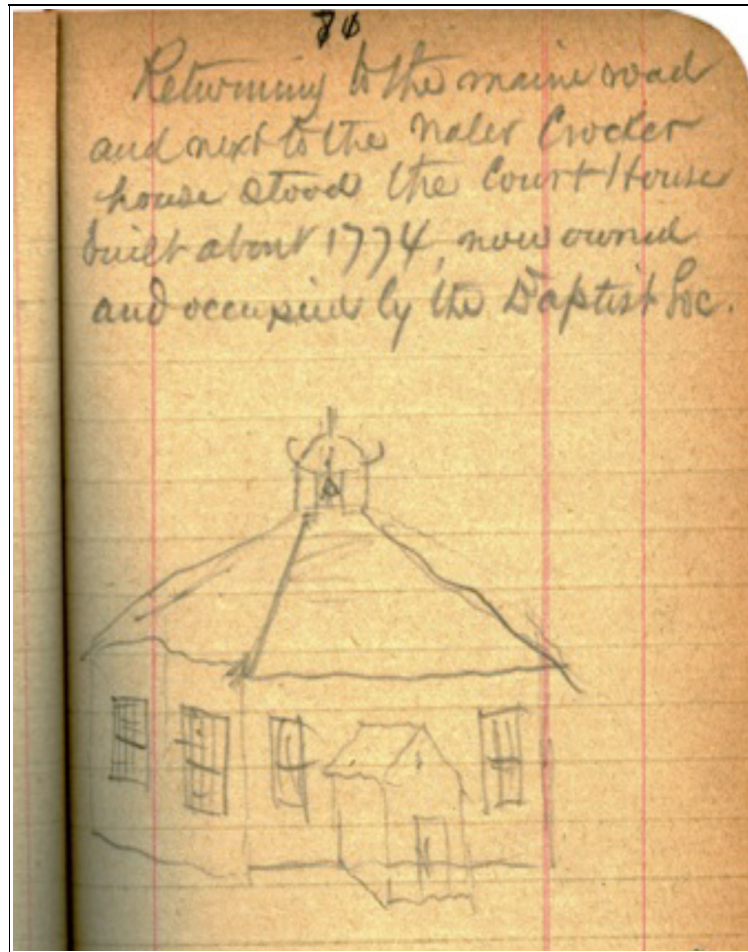


Figure 9. The Hinckley sketches of the Olde Colonial Courthouse

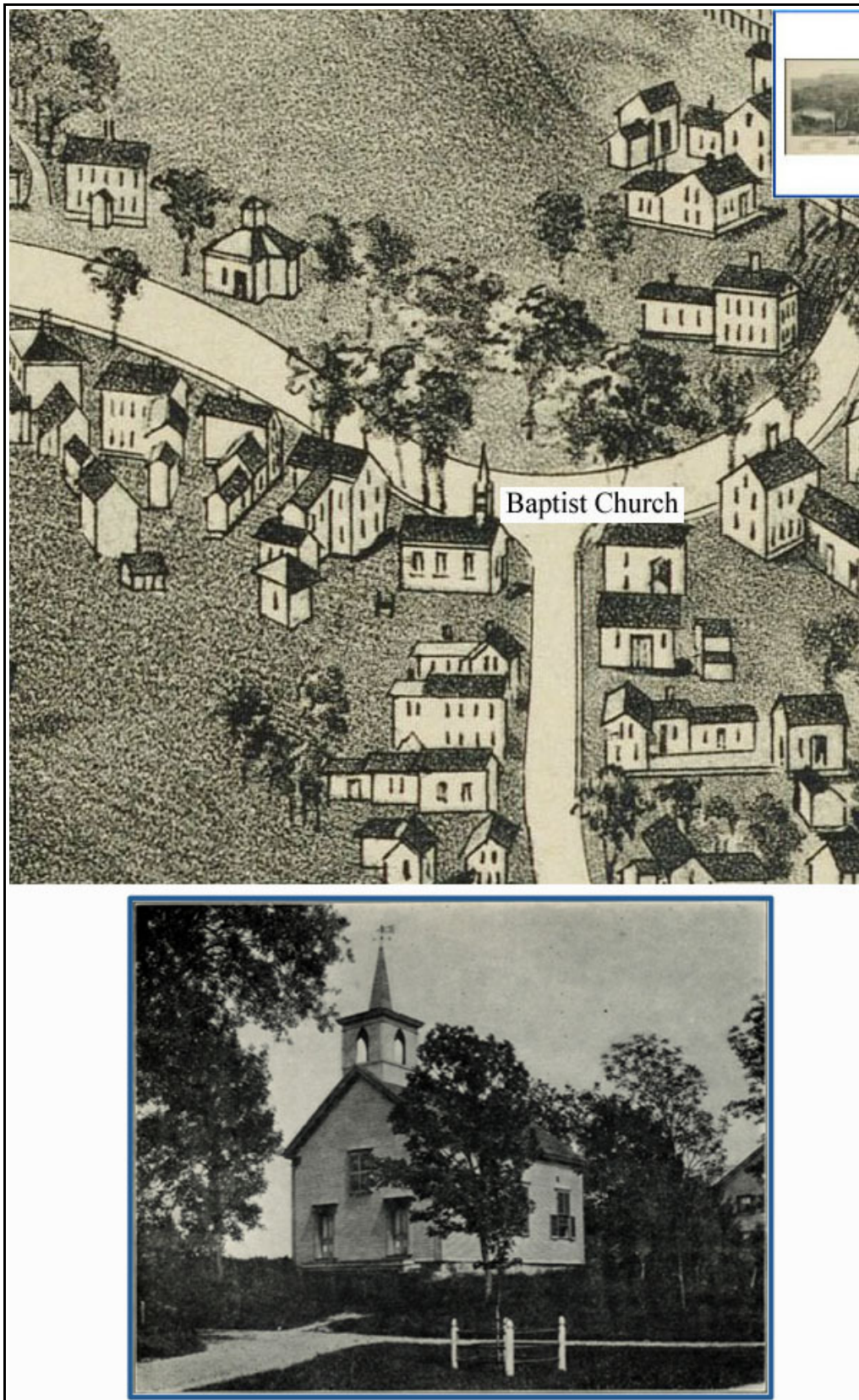


Figure 10. The first images of the Baptist Society church (19th century) (top: 1884 lithograph of Barnstable)



Figure 11. Pocket for original hip roof corner rafter



Figure 12. Carpenter drawing in attic at NW corner



Figure 13. 18th century paneling on south wall



Figure 14. Roof hole



Figure 15. Platform made with reused risers beneath hole in roof



Figure 16. Girt mortise in attic



Figure 17. 20th century chimney base in crawlspace



Figure 18. Original joist pocket in south sill



Figure 19. White oak ship's knee brace