

Figure 25. Redware vessels

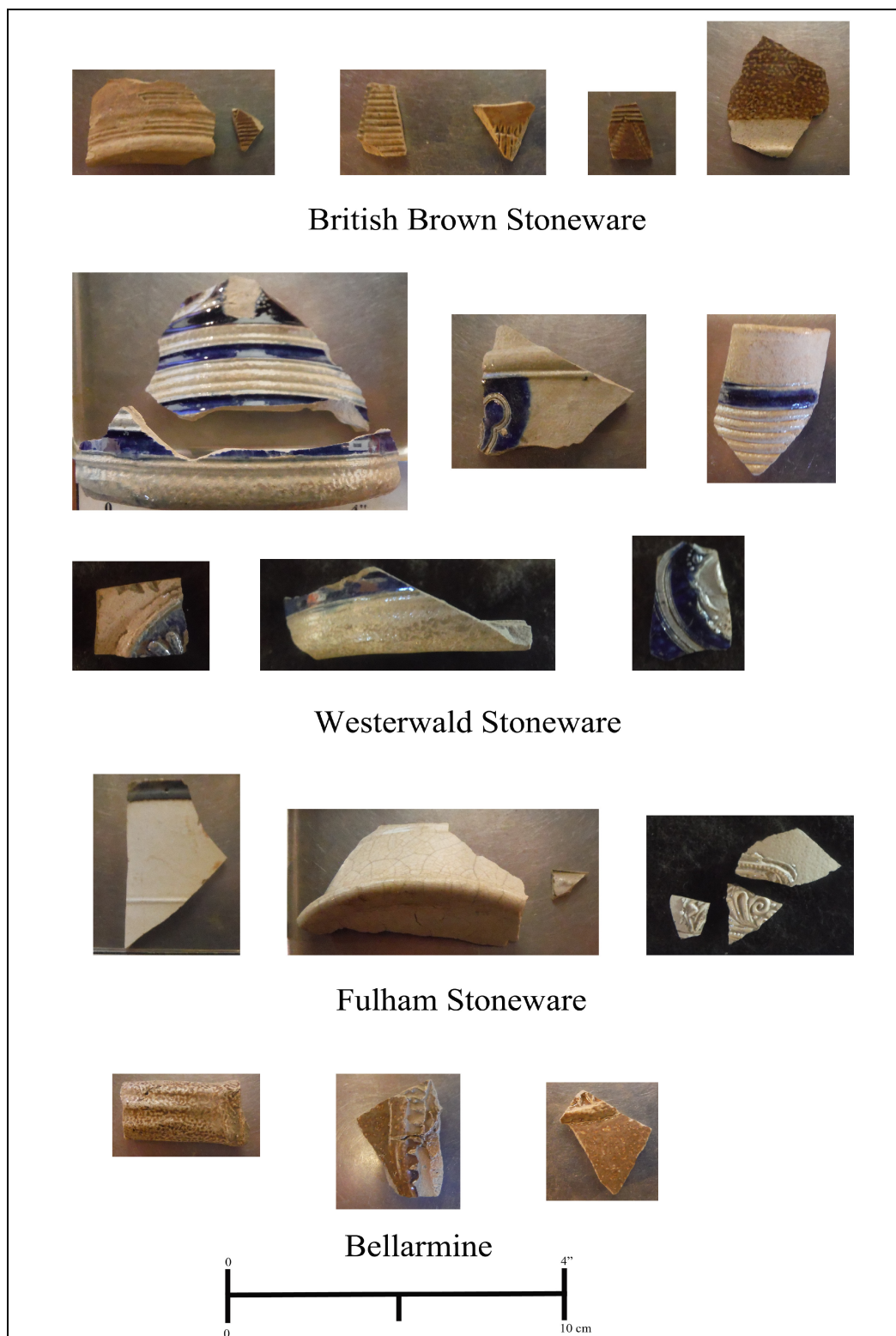


Figure 26. Stoneware vessels

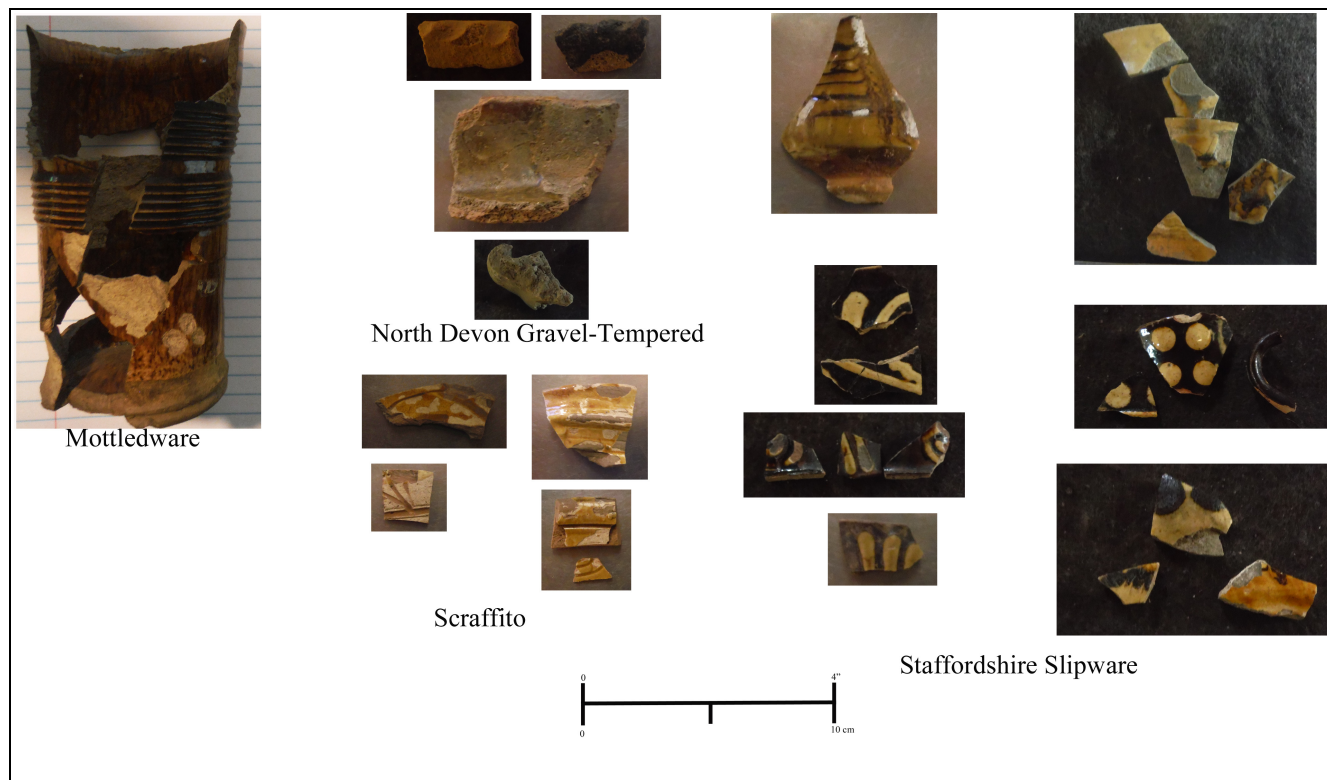


Figure 27. Earthenware vessels



Figure 28. Tin-glazed vessels

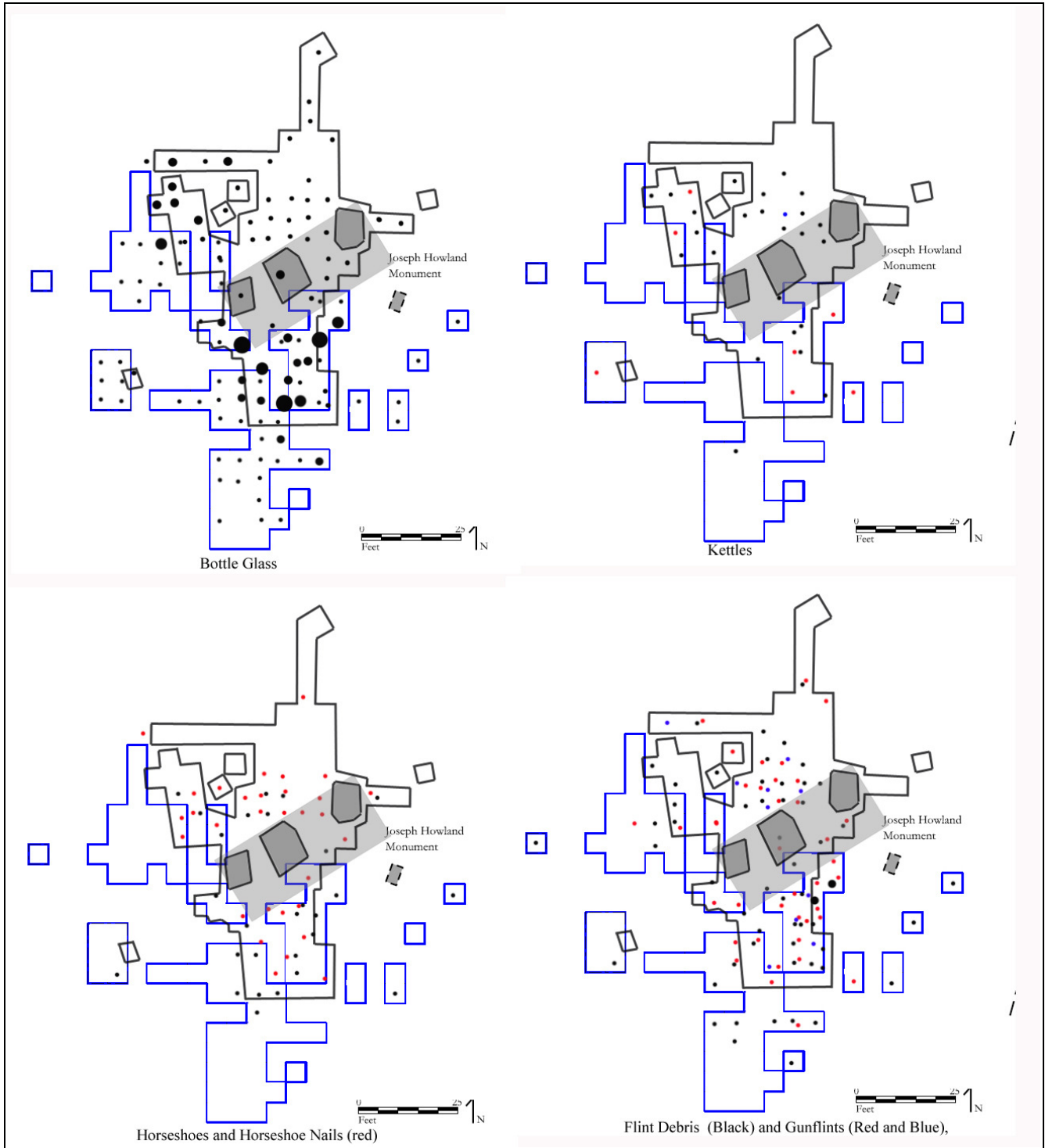


Figure 29. Bottle glass, kettles, horseshoes and horseshoe nails, and flint distributions



Figure 30. Wine bottles (Top four rows), medicine bottles/ small bottles (Middle row), Case bottles (bottom row)

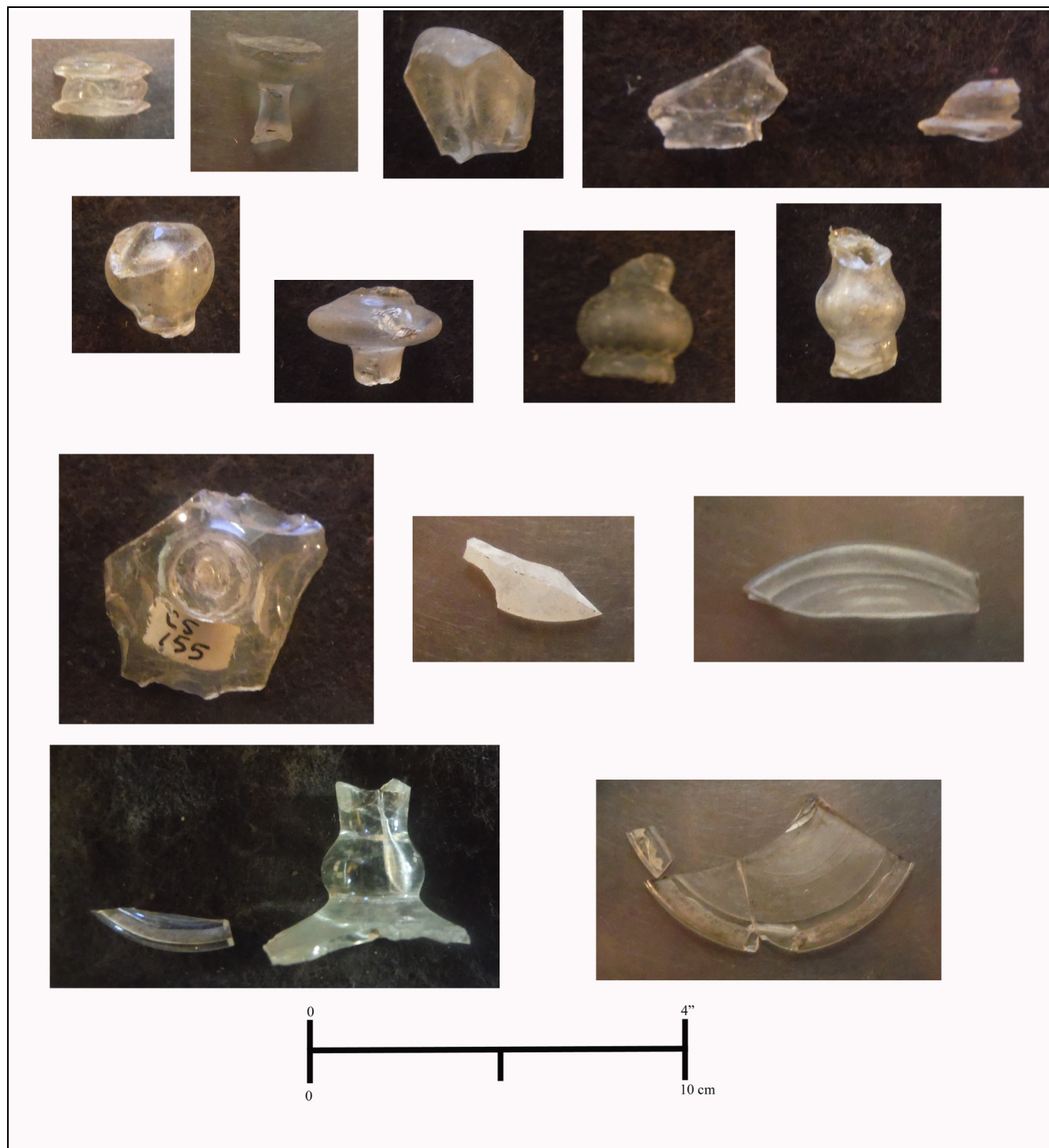


Figure 31. Wine glasses

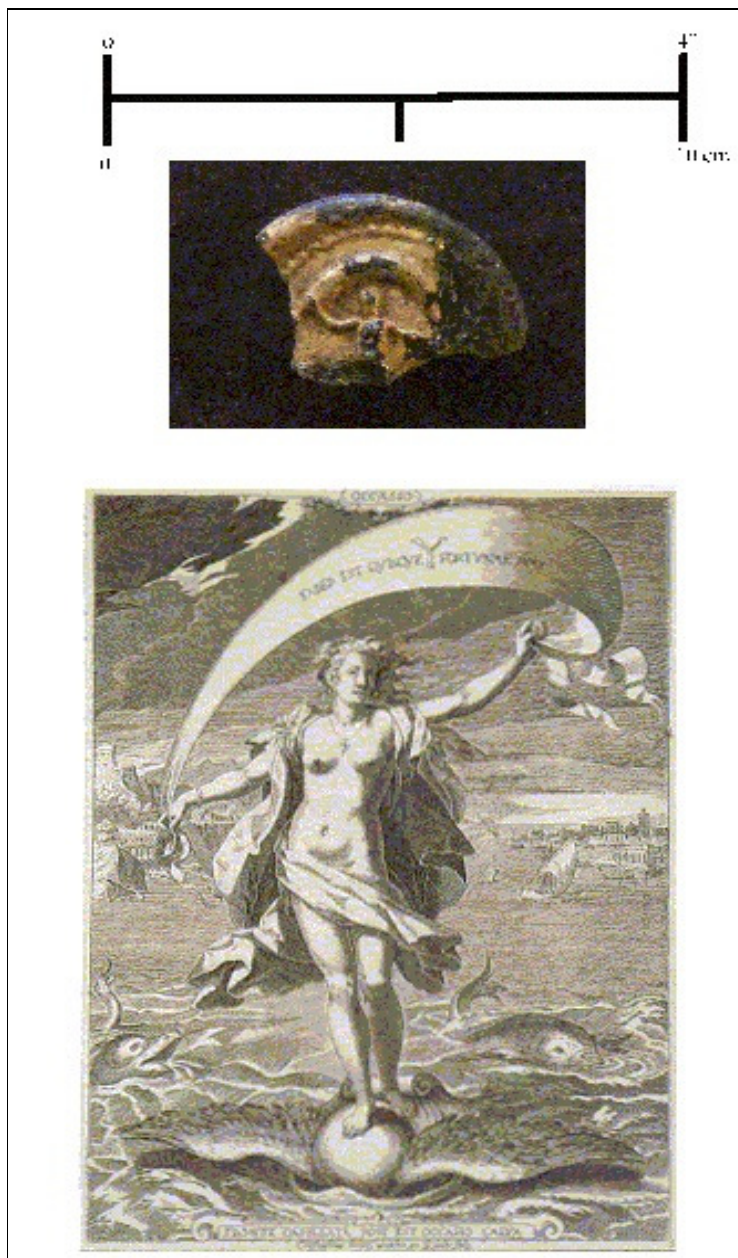


Figure 32. The goddess Fortuna depicted on a wine bottle seal



Figure 33. Foodways hearth equipment



Figure 34. Knives and knife handles



Figure 35. Latten spoons



Figure 36. Pewter spoons (the famous Howland Spoon is pictured at the bottom)



Figure 37. Tobacco pipes and pipe tools (Top Row; Left to Right- 1640-1660 style, EB marked pipe, molded dots on bowl, possible Virginia pipe: Second Row; Left to Right-Cartouche-marked bowls, RT marked bowl: Third Row; Left to Right- marked stems, 1700-1770 pipe bowl: Fourth Row; Left to Right- 1680-1710 heeless funnel, 1720-1820 heeless funnel: Bottom Row- Smoker;s companions)

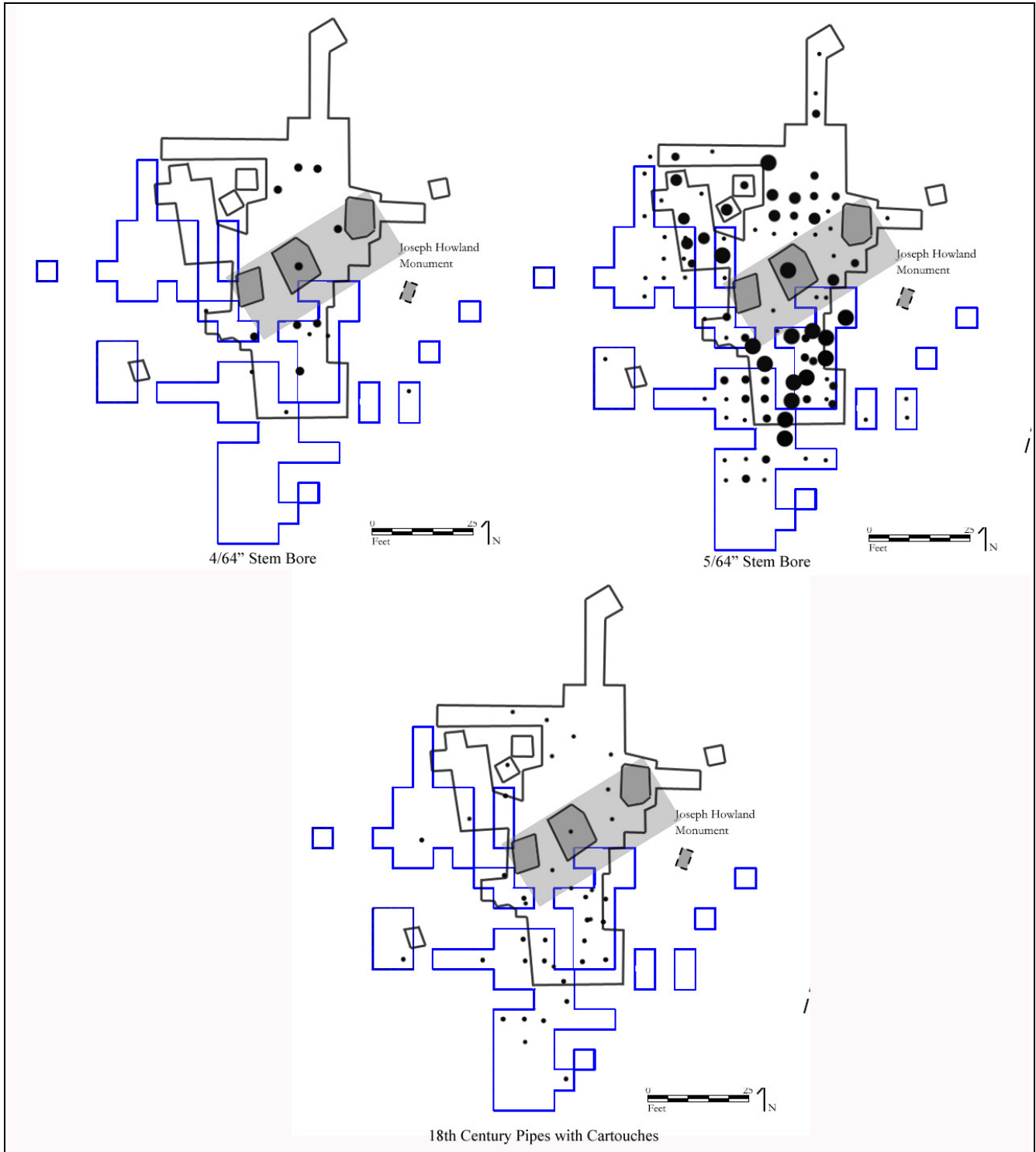


Figure 38. Distributions of pipes with stem bores measuring 4 and 5/64" (1700-1800) and bowls marked with cartouches

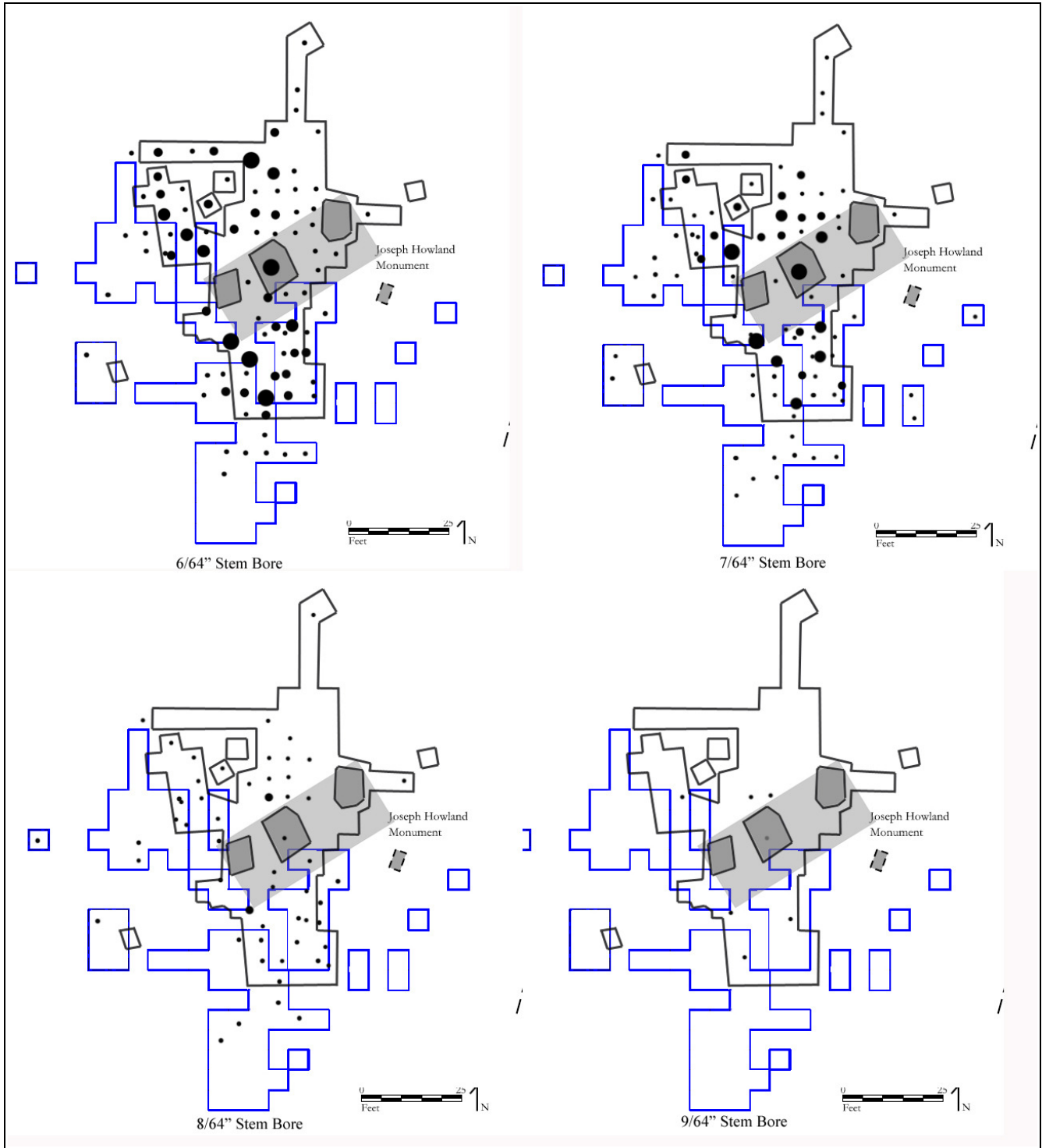


Figure 39. Distribution of 17th century pipe stems

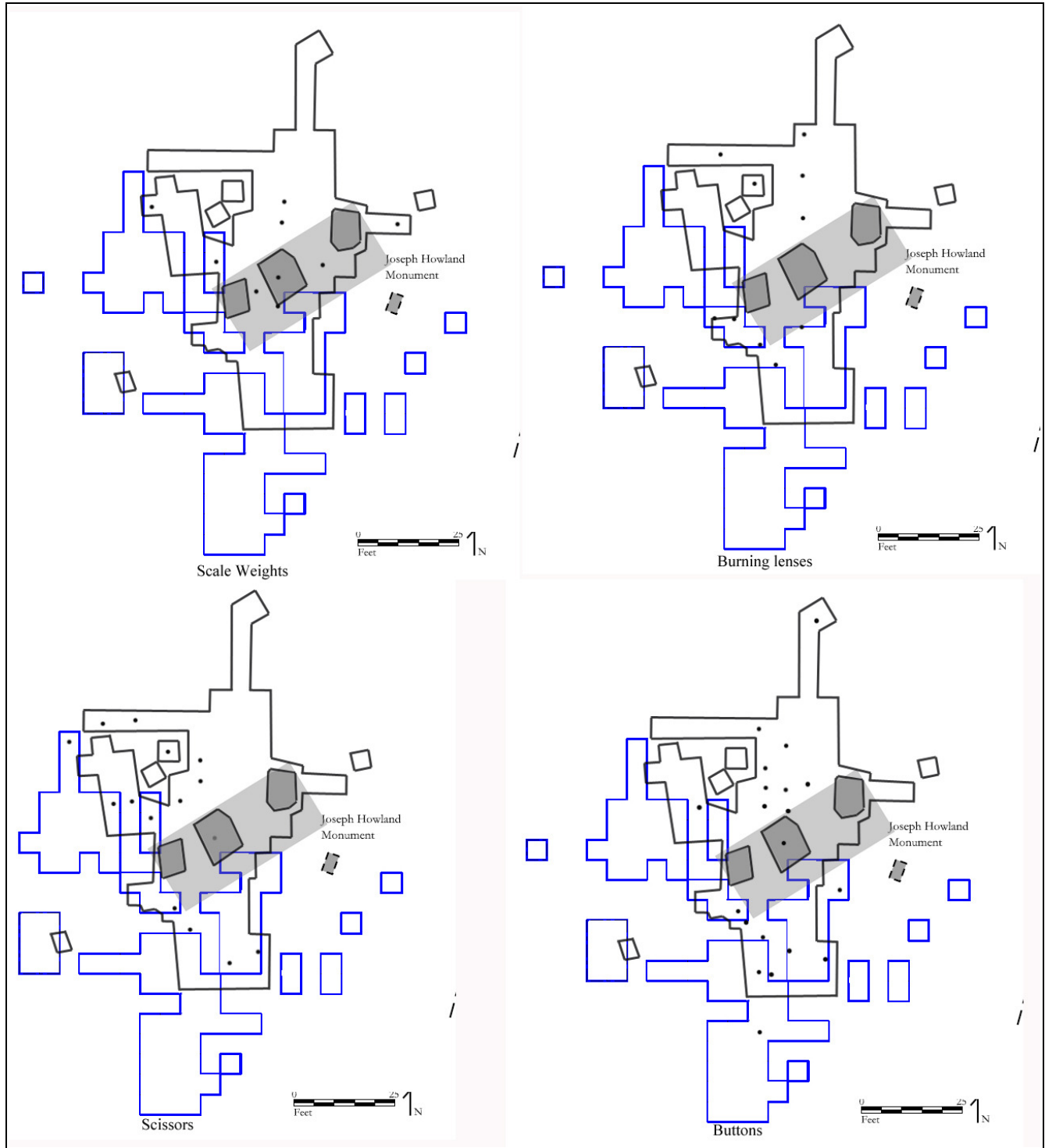


Figure 40. Distribution of personal artifacts



Figure 41. Personal items (Top Row; Left to Right- bone awl, bone bodkin and representative complete example not from site; Second and third rows- beads: Fourth Row- Fan blade: Bottom Row- combs)



Figure 42. Leather knife sheath (top) gallon with silver thread (bottom)